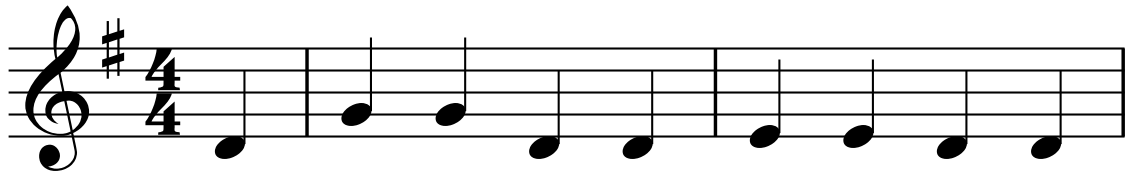


B-I-N-G-O

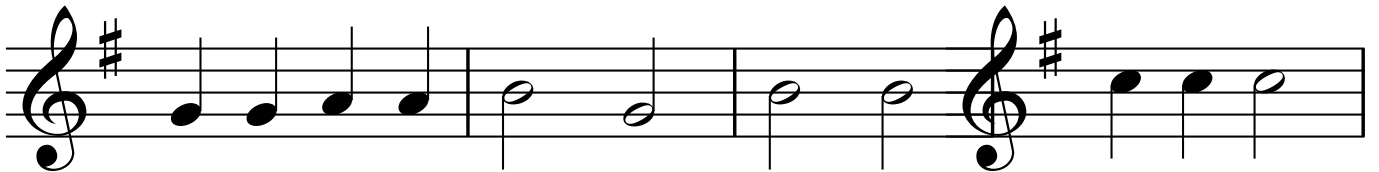
Traditional

Voice Oohs



There was a far - mer had a dog and

4



Bin-go was his name Oh B - I - N - G - O

8



B - I N - G - O B - I - N - G - O and

12

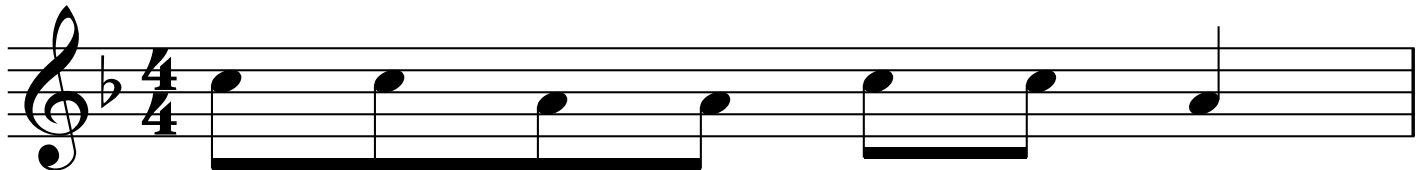


Bin - go was his name Oh!

You good dog

Doggie Doggie

14



Musical notation for measure 14, starting with a treble clef, a key signature of one flat (B-flat), and a 4/4 time signature. The melody consists of quarter notes: G4, A4, Bb4, C5, Bb4, A4, G4. A thick black line is drawn under the first four notes (G4, A4, Bb4, C5).

Dog - gie Dog - ie Where's your bone?

15

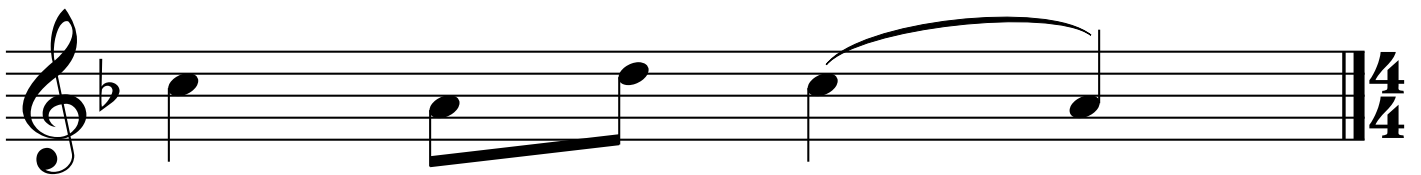
Traditional



Musical notation for measure 15, continuing with a treble clef, a key signature of one flat, and a 4/4 time signature. The melody consists of quarter notes: G4, A4, Bb4, C5, Bb4, A4, G4, followed by a double bar line. The second part of the measure starts with a new treble clef and a key signature of one flat, with quarter notes: G4, A4, Bb4, C5. A slur is placed over the last two notes (Bb4, C5).

Some-one stole it from your home. Who stole your bone?

17

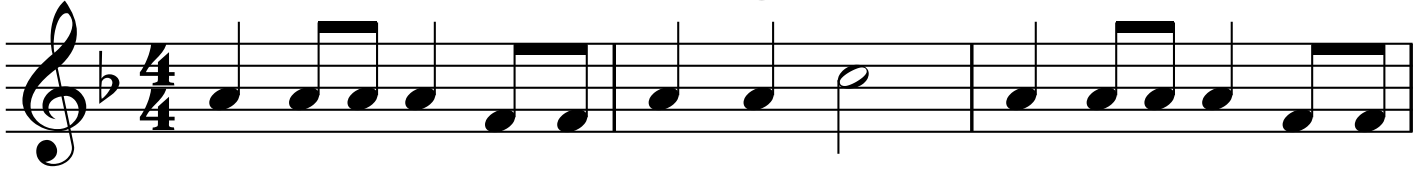


Musical notation for measure 17, continuing with a treble clef, a key signature of one flat, and a 4/4 time signature. The melody consists of quarter notes: G4, A4, Bb4, C5. A slur is placed over the last two notes (Bb4, C5). The measure ends with a double bar line and a 4/4 time signature.

Who stole your bone?

18

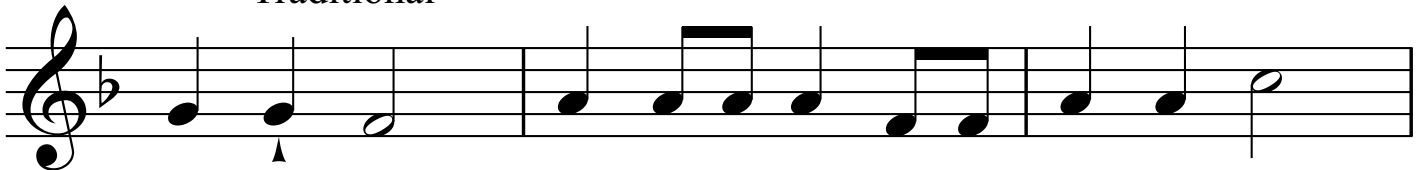
Old Blue



I had a dog and his name was Blue. I had a dog and his

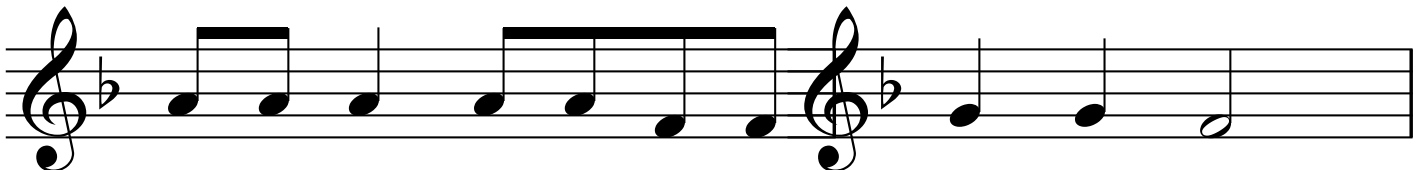
21

Traditional



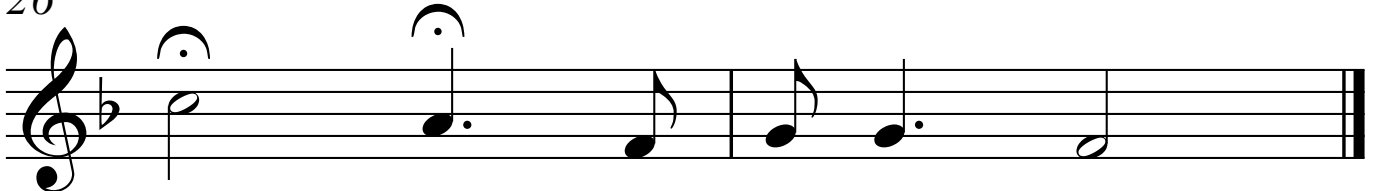
name was Blue. I had a dog and his name was Blue.

24



Betch - a five dol - lars he's a good dog too.

26



Here Blue! You good dog you!